

FIRST 5
Sacramento Commission
EVALUATION COMMITTEE
2750 Gateway Oaks Drive, Suite 330
Sacramento, CA 95833

AGENDA

Monday **February 22, 2010** **1:00 PM**

Members: Robert Bonar, Terry Jones, Marcie Launey, Scott Moak, Marilyn Ratkay

Staff: Toni Moore, Julie Field

Consultants: Fred Molitor, Summerlynn Anderson, Lisa Branton, Gary Resnick

Clerk: Cheryl Rookwood

1. Approve January 25, 2010 Draft Action Summary (*5 minutes*)

2. [Monthly Commission Staff Status Report](#) (*5 minutes*)

3. Quarterly Contractor Compliance Update (*5 minutes*)

4. [WRMA Monthly Progress Report](#) (*5 minutes*)

5. HKHF Evaluation Discussion – OERU (*30 minutes*)

6. Approve Evaluation Services RFA Funding Recommendation (*30 minutes*)

7. Committee Member Comments (*5 minutes*)
 - a. Miscellaneous
 - b. Future Agenda Items

8. Public Comments on Non-Agenda Matters (*5 minutes*)

The meeting is voice recorded in its entirety. A CD will be available for checkout from the First 5 Sacramento Commission offices at 2750 Gateway Oaks Dr., Suite 330, Sacramento, the day after the meeting.

The on-line version of the agenda and associated materials are posted for your convenience at <http://www.first5sacramento.net/default.htm>. Some documents may not have been posted on-line because of their size and/or format. As they become available, hard copies of all documents are available from the Clerk of the Commission at the First 5 Sacramento Commission offices.

FIRST 5 SACRAMENTO COMMISSION

For the Agenda of:
February 22, 2010

To: Evaluation Committee Members

From: Julie Field
Evaluation Manager

Subject: Monthly Commission Staff Status Report

Evaluation Services RFA

The Evaluation Services RFA was released on December 30, 2009. Letters of Intent were due on January 5, 2010. Nine (9) Letters of Intent were submitted and accepted as complete and timely. The deadline for these groups to submit the RFA was January 29th. On January 29th, two proposals were delivered to the Commission office and were considered timely and complete. First 5's internal review process wrapped up on February 8th. The secondary review panel will meet on February 10th and February 17th to review the scoring rubric and review the RFA responses. If the Secondary Review Panel decides that more information is needed to make a funding recommendation, the applicants will be asked to attend an Oral Review Panel on February 22nd prior to the Evaluation Committee meeting.

Funding recommendations will be decided at the conclusion of the review process and a recommendation will be made to take to the full Evaluation Committee at the February 22nd meeting. The Evaluation Committee will then make a funding recommendation that will be presented to the Commission at the April 2010 meeting. Prior to the April Commission meeting, there will be a period of time that allows for any protests based on the selection of the Evaluation Services contractor. Any issues that arise from this process will be presented to the Evaluation Committee at the March 15th meeting.

Maternity Leave

I am scheduled to begin maternity leave on February 26th. I plan on remaining on leave until October 1, 2010. The staff liaison to the Evaluation Committee will be Carmen Garcia-Gomez.



Walter R. McDonald & Associates, Inc.

Contract #06/07-ADM-031

First 5 Sacramento Evaluation

Monthly Progress Report for:
January 2010

February 2, 2010

Prepared for:

First 5 Sacramento Commission

Prepared by:

Walter R. McDonald & Associates, Inc.

2720 Gateway Oaks Dr., Suite 250

Sacramento, CA 95833

fmolitor@wrma.com

916-239-4020, ext. 246

First 5 Sacramento Evaluation Contract

SECTION I: INTRODUCTION, PURPOSE AND SCOPE

The Sacramento County First 5 Commission has contracted (Contract #06/07-ADM-031) with the team of Walter R. McDonald & Associates, Inc. and Harder+Company Community Research for evaluation services during the 2007-2010 period. For this deliverables-based contract, our team submits monthly progress reports as a key communication tool for all concerned stakeholders. In the monthly progress report we identify the status of major deliverables in the contract. We also preview deliverables that are expected to be submitted in the subsequent month and identify key questions or challenges that need to be resolved.

For this work period, our primary activities related to Tasks 3, 5, and 6.

SECTION II: WORK PLAN

The work under this contract is organized according to the following tasks.

- Task 1 Strategic Planning Activities
- Task 2 Evaluation Design, Scope and Report
- Task 3 Funding Processes
- Task 4 Contract Negotiations
- Task 5 Evaluation Support, Planning, Collecting and Reporting
- Task 6 Data Collection Management System, Outcomes Collection, Analysis and Reporting
- Task 7 First 5 Sacramento Commission Evaluation Annual Report
- Task 8 State Evaluation and First 5 California Annual Report

SECTION III: PROGRESS

Task 1 Strategic Planning Activities

Scheduled Period of Activity: Phase 2/Year 3 & 4

Deliverables: Monthly Progress Reports

Status: Completed

Task 2 Evaluation Design, Scope and Report

Scheduled Period of Activity: Phase 1/Year 1 & Phase 2/Year 2 & 3

Deliverable 1: Draft Evaluation Design Report

Deliverable 2: Final Evaluation Design Report

Deliverable 3: Evaluation Design Report (Year II)

Deliverable 4: Evaluation Design Report (Year III)

Status: Completed

Task 3 Funding Processes

Scheduled Period of Activity: Phase 2/Year 2

Deliverables: Monthly Project Reports

During January the Project Director reviewed and scored the applications submitted to First 5 Sacramento for Effective Parenting services.

Task 4 Contract Negotiations

Scheduled Period of Activity: Phase 1/Year 1

Deliverable: Completed

Task 5 Evaluation Support, Planning, Collecting and Reporting

Scheduled Period of Activity: Phase 1/Year 1 & Phase 2/Year 2, 3 & 4

Deliverable: Monthly Progress Reports

On January 5, the Project Director participated in a meeting at First 5 Sacramento with Commissioners Moak and Sample to prepare for the presentation on Community Building Initiative events scheduled for the February 8 Commission meeting.

On January 11, the Data Manager trained two staff at Twin Rivers USD on consent and intake procedures.

The highlights of evaluation findings were presented at the January 21 Quarterly Contractor Forum.

The two abstracts approved by the Evaluation Committee were submitted to the American Public Health Association in January.

The Data Manager continued to work with Gina Roberson and First 5 Sacramento staff to respond to additional feedback received from Child Abuse Prevention Center (CAPC), on the milestones developed for the expansion of the Family Support Collaborative (FSC) to provide home visitation services.

Task 6 Data Collection Management System, Outcomes Collection, Analysis and Reporting

Scheduled Period of Activity: Phase 1/Year 1 & Phase 2/Year 2, 3 & 4

Deliverables: Monthly and Quarterly Progress Reports

The Data Manager worked with Carole Sepulveda to move clients who were entered into Persimmony under the original Nurse Family Partnership (NFP) contract to the expansion contract of NFP.

On January 12, the Data Manager provided training to Myel Jenkins (First 5 Sacramento Program Planner) on the tracking of milestone data reported to First 5 Sacramento in Persimmony. On January 13, the Data Manager returned to Twin Rivers USD to train two staff on the entry of client-level data into Persimmony. Complications arose involving the size of one staff-person's computer monitor, of which the Data Manager informed Sara Haycox. The Data Manager will return to provide client-level data entry training when the two staff are ready.

In the month of January, the Data Manager urged staff overseeing the Family Support Collaborative data to begin planning for the data import of the new home visitation contracts. With a plan for the data import provided to the Data Manager on January 20 and subsequent questions by Child Abuse Prevention Center (CAPC) and the Evaluation Manager, a request was made by CAPC to discuss the data import plan with the Data Manager and Evaluation Manager. On January 27, the Data Manager and Evaluation Manager spoke with CAPC; a consensus was reached including a few changes to the proposed data import plan. One key change is that all clients receiving only home visitation services (they have not received Effective Parenting

Initiative (EPI) or Crisis Intervention (CI) services) on or after August 1, 2009 will be designated as enrolled “through home visitation.” Two additional weeks were agreed upon to allow for the development of the programming necessary to support the data import of the new contracts; import files due to be submitted for the Data Manager’s review by February 14.

Task 7 Annual First 5 Sacramento Evaluation Report

Scheduled Period of Activity: Phase 2/Year 3 & 4

Deliverables 1: Annual First 5 Sacramento Evaluation Report (Year 3)

Status: Completed

Deliverables 2: Annual First 5 Sacramento Evaluation Report (Year 4)

Status: Due December 31, 2009

Task 8 State Annual Report

Scheduled Period of Activity: Phase 2/Year 2, 3 & 4

Deliverables 1: Annual First 5 Sacramento Evaluation Report (Year 2)

Deliverables 2: Annual First 5 Sacramento Evaluation Report (Year 3)

Deliverables 3: Annual First 5 Sacramento Evaluation Report (Year 4)

Status: Completed

SECTION V: WORK TO BE PERFORMED IN THE NEXT REPORTING PERIOD

Task 5 Evaluation Support, Planning, Collecting and Reporting

Key Tasks:

- Interview candidates for Field Interview positions.
- January Evaluation Newsletter.
- Retrieve consent forms.

Task 6 Data Collection Management System, Outcomes Collection, Analysis and Reporting

Key Tasks:

- Provide additional Persimmony training to contractor

SECTION VI: KEY CHALLENGES OR QUESTIONS TO BE RESOLVED

- It has taken four months to collect the data for the two prior Parent Interviews. If data collection were extended again until the end of June this year, this would leave only two months before the due date for the Annual Report. We hope to reduce the data collection period to three months by conducting a greater proportion of interviews by telephone. This should not affect the quality of the data too much since all parents participating in interviews this year have already been interviewed before. Thus, they will be familiar with the process and types of questions and response options. Also, field interviewers will be trained to schedule face-to-face interviews when they experience a parent having difficulties with the interview. Ending the two-year follow-up Parent Interview in May will give us a valuable extra month to enter, clean, and analyze the data, and complete a draft of the report by August 31.

WRMA

Walter R. McDonald & Associates, Inc.

Quarterly Report

For the period of October 31 to December 31, 2009

Prepared for:

First 5 Sacramento Commission
2750 Gateway Oaks Drive, Suite 330
Sacramento, CA 95833

Prepared by:

Walter R. McDonald & Associates, Inc.
2720 Gateway Oaks Drive, Suite 250
Sacramento, CA 95833

Quarterly Report

Prepared for:

First 5 Sacramento Commission
2750 Gateway Oaks Drive, Suite 330
Sacramento, CA 95833

Prepared by:

Walter R. McDonald & Associates, Inc.
2720 Gateway Oaks Drive, Suite 250
Sacramento, CA 95833

Supplemental Analyses of Breastfeeding Data

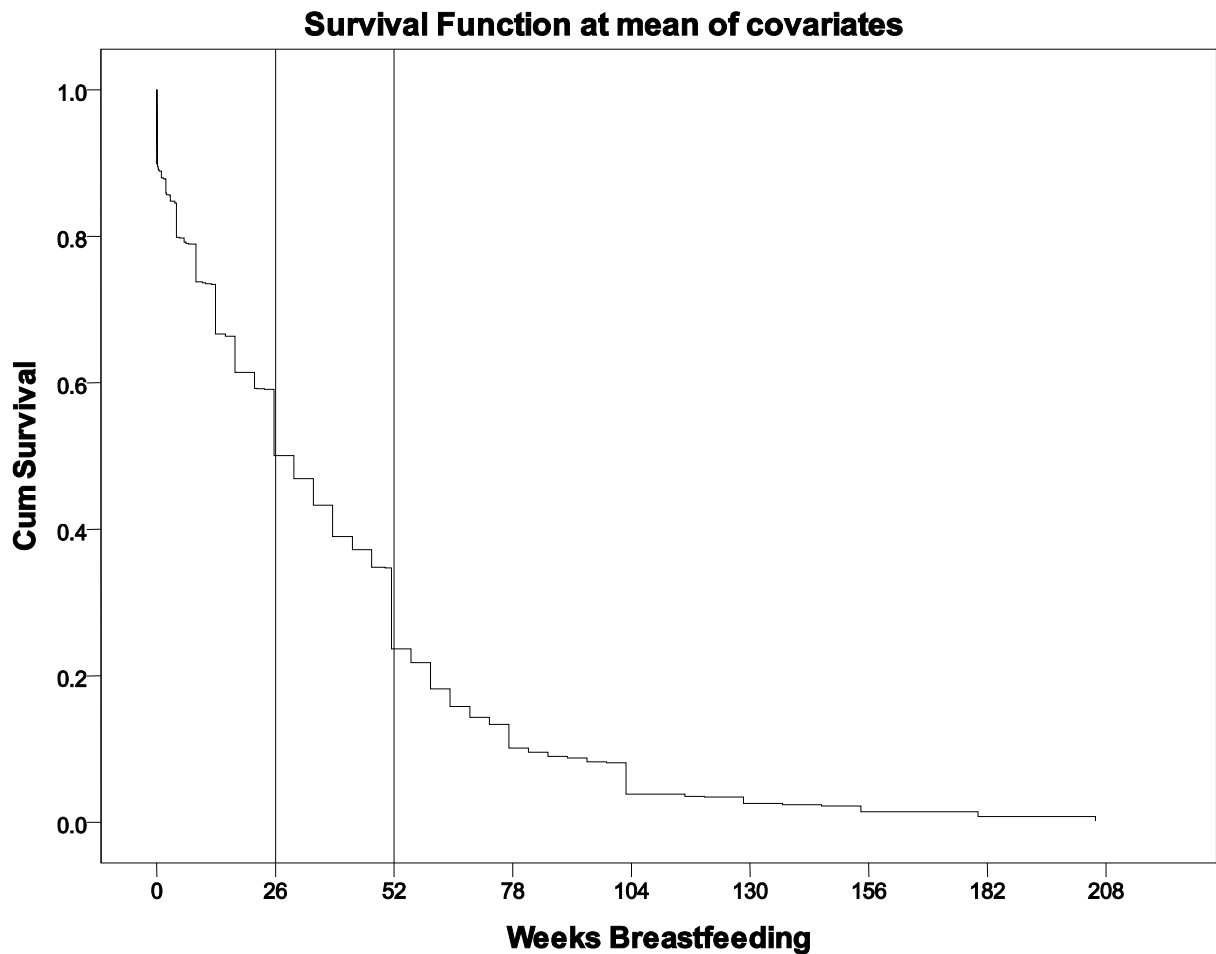
The analyses of the responses to the breastfeeding items from the Parent Interview have been guided by WIC's definitions of "exclusive" breastfeeding. Breastfeeding behaviors are also assessed by simply the length of time that children are breastfed, regardless of when or what other types of nutrition are introduced into the child's diet. The Centers for Disease Control and Prevention (CDC) report breastfeeding rates based on this definition, and breastfeeding duration is assessed this way for the Healthy People 2010 objectives.

To examine breastfeeding rates among First 5 Sacramento mothers in comparison to findings from the CDC's National Immunization Survey, and whether First 5 Sacramento mothers are meeting the Healthy People 2010 objectives, we examined Parent Interview responses using a statistical technique called "survival analysis." One advantage of survival analysis is that "incomplete observations" are included from the analyses. That is, we do not exclude responses from mothers who are still breastfeeding but have not yet reached the critical time points of six and 12 months from birth, as we did for the findings presented in our fiscal year 2008/09 annual report. In fact, survival analyses estimate the length of time for survival (i.e., breastfeeding duration) for those mothers who are still breastfeeding, or what survival analyses refers to as "censored observations." On a side note, survival analyses get its name from studies seeking to examine time from intervention to death among a cohort of subjects. The technique allows for estimating how long subjects will live based on the information collected from those who have and have not already died when the data are analyzed.

Figure 1 presents a survival curve for breastfeeding duration, with time spent breastfeeding coded into weeks. The descending curve represents the length of time that First 5 Sacramento mothers breastfeed their children, with race/ethnicity, language, and family education controlled. The Y-axis represents the proportion of the population breastfeeding until specific time points. Approximately 10% of First 5 Sacramento mothers never initiated breastfeeding, and this is represented on the Y-axis by the proportion of mothers corresponding to breastfeeding for 0 weeks (days). Since the Y-axis displays the cumulative proportion, we can interpret the figure to say that about 90% of mothers breastfeed for more than 0 weeks.

On the X-axis we have placed vertical lines on the 26 weeks (6 months) and 52 weeks (12 months) time points. From the graph it is difficult to identify the exact proportions corresponding to these time points, but from the SPSS output we were able to determine that 50.0% of mothers breastfeed for six months and 23.5% for 12 months. Thus, First 5 Sacramento mothers are, for the most part, meeting the Healthy People 2010 objectives of 50% and 25% for these time points. However, national breastfeeding rates for the most current National Immunization Survey are 43.4% and 22.7%, respectively. As such, breastfeeding rates among First 5 Sacramento mothers are higher than the national averages.

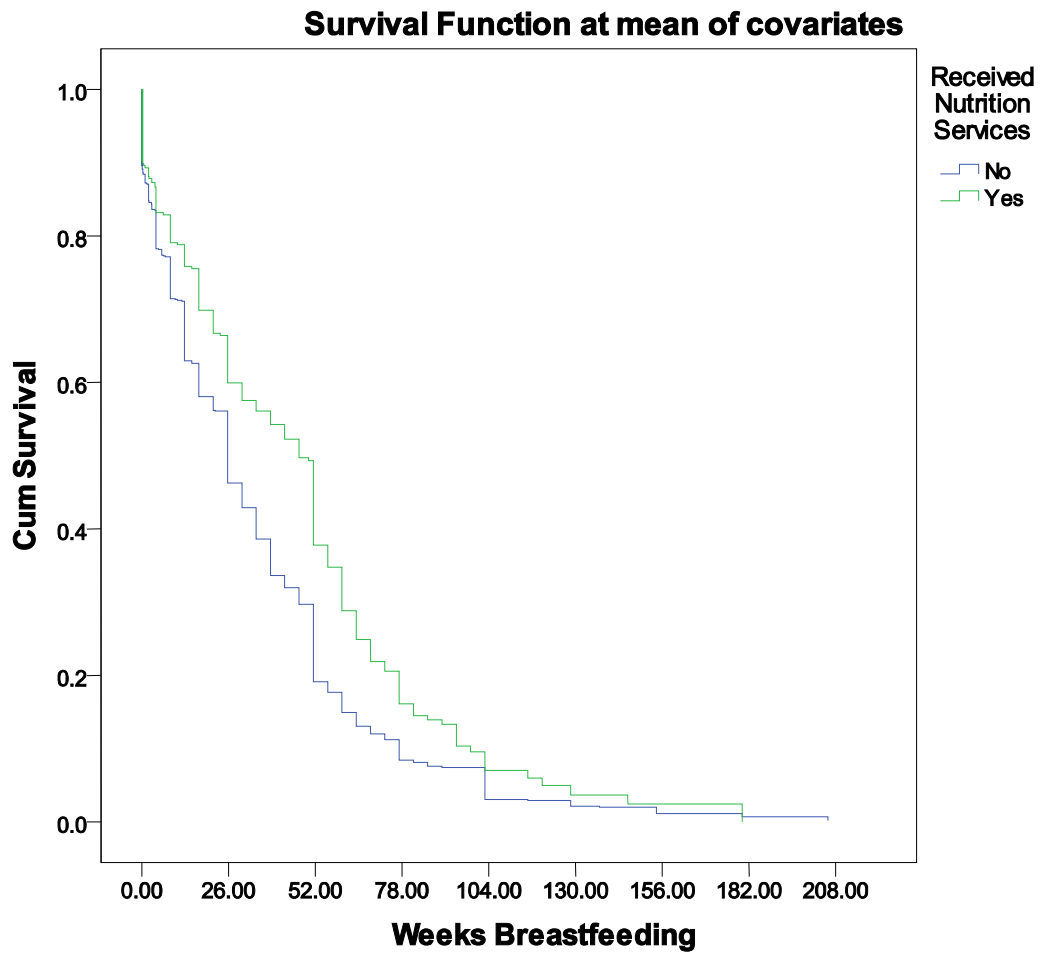
Figure 1



In addition to producing survival curves, survival analysis identifies significant correlates of the outcome variable. We reran the analyses to include a variable representing the number of breastfeeding support services each mother received, as recorded in Persimmony, along with the three control variables. We found this breastfeeding service variable significantly relates to breastfeeding duration. In fact, in this model it turned out to be the strongest predictor of breastfeeding duration.

The last survival model we developed compared breastfeeding duration between mothers receiving and not receiving *Nutrition* services. As seen in Figure 2, a greater proportion of *Nutrition* mothers breastfed for longer. This is exactly what we would expect, given the findings above. Our primary purpose in showing this table is to demonstrate how the trend presented in Figure 1 could be compared with future Parent Interview data collected from other samples of parents, as presented in Figure 2.

Figure 2





EVALUATION NEWSLETTER

January 2010

2008/09 Evaluation Findings

We previewed some of the highlights from the fiscal year 2008/09 evaluation report at the January 21 Quarterly Contractor Forum. For this edition of the Evaluation Newsletter, we would like to again review some important outcomes from the evaluation. The findings presented here do not include those found for Community Building Initiative (CBI) events because we reviewed these results in our October 2009 Newsletter.

Dental Care by 1 Year of Age: It is now recommended that children see a dentist by 12 months of age. The rate of children seeing a dentist by their first birthday significantly increased from 3% to 13% over a year's time. These analyses were conducted only for families who received services from Cover the Kids because this is a First 5 Sacramento Commission indicator applicable only to the *Health Access* Result Area.

Immunizations: Among families receiving services through Cover the Kids, immunization rates increased to levels above the state and national averages.

Breastfeeding: The time points of six months and one year from birth have been identified by the First 5 Sacramento Commission as the criteria for evaluating the impact of breastfeeding services. Among mothers receiving lactation support services through the *Nutrition* Result Area, our Parent Interview found six- and 12-month rates to surpass those reported across the nation. Among all First 5 Sacramento mothers, 12-month breastfeeding rates went from 14% at baseline to 22% a year later. This was found to be a significant increase.

Knowledge of Infant Development: One of the many strategies used by *Effective Parenting* providers to improve parenting skills is by offering educational information on children's development. The *Effective Parenting* services of parenting classes and case management were found to significantly correlate with increased knowledge of infant development. These findings underscore the importance of recording service information into Persimmony. Persimmony service data are linked with Parent Interview responses to investigate which services are related to outcomes of interest to the First 5 Sacramento Commission.

Parent Stress: A number of factors can influence levels of stress, and high stress can in turn lead to parent behaviors that are unhealthy for children. The Elk Grove Unified School District, Power of Parenting (POP) program offers Father Engagement events that, among other positive outcomes, are designed to address fathers' stress. These events include Pizza for Papa, Read to Me Daddy, Dad's Career Day, and Dad and Me at School. Our analyses found that the more fathers attended these events, the more levels of reported stress decreased. Interestingly, since most of the Parent Interview participants were mothers, this finding suggests that Father Engagement services reduce levels of stress initially among **fathers, which translate** into lower levels of stress within the family

Preschool Attendance: We found that children receiving *School Readiness* services had higher rates of preschool attendance than the rate reported across Sacramento County. This was not a complete surprise since this is a central focus of *School Readiness* services. However, we were pleased to see preschool rates for all First 5 Sacramento children to exceed the County rate.

THE EVALUATION TEAM:

The evaluators of First 5 Sacramento represent a team from Walter R. McDonald & Associates, Inc. (Sacramento) and Harder+Company Community Research (Davis). The evaluation team is dedicated to assessing the impact of First 5 Sacramento services on families throughout Sacramento, while minimizing the amount of time that contractors have to spend on evaluation activities. Please call us if you have any questions about the evaluation of First 5 Sacramento services: WRMA 916.239.4020; H+Co 530.757.8420.